



BULK MATERIAL HANDLING SYSTEMS

Company Presentation

SAF MAK 

“Single Point of Responsibility
at the Service of Industry”

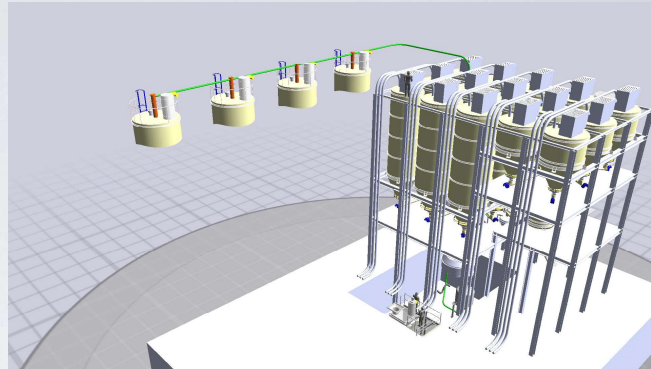
SAF MAK The logo icon for SAF MAK consists of a 2x2 grid of squares, with the bottom-right square containing a stylized arrow pointing to the right.

E.O.C.

ERGIN

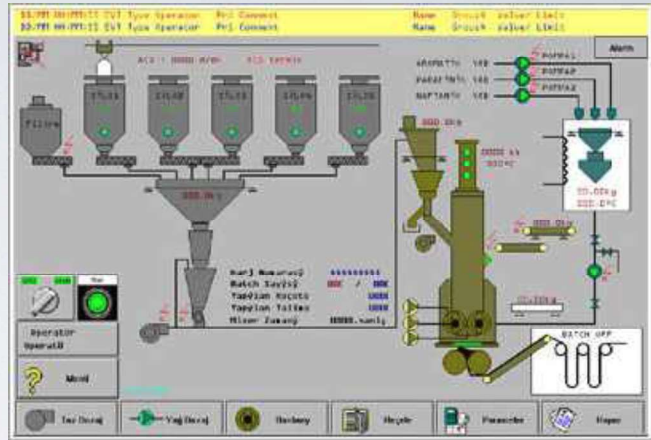
SAF MAK 

Mechanical Design,
Manufacturing &
Assembly



E.O.C.

Software / PLC
Programming
Commissioning &
Technical Service





Procurement of Industrial
Electrical, Automation &
Instrumentation Equipment



SAF MAK 

1983

E.D.C.

1982

ERGİN

1974

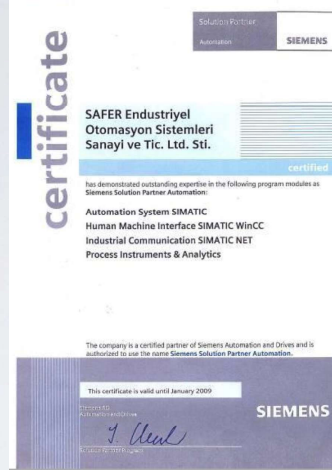


1983-2018





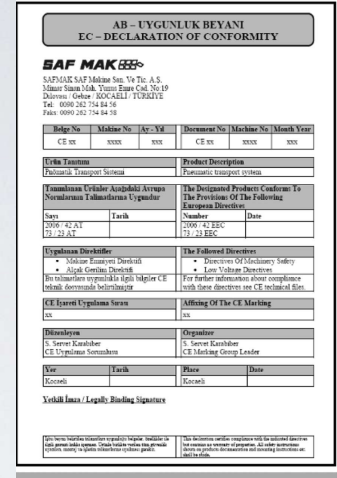
ISO
9001



SIEMENS
PARTNER



FESTO
PARTNER



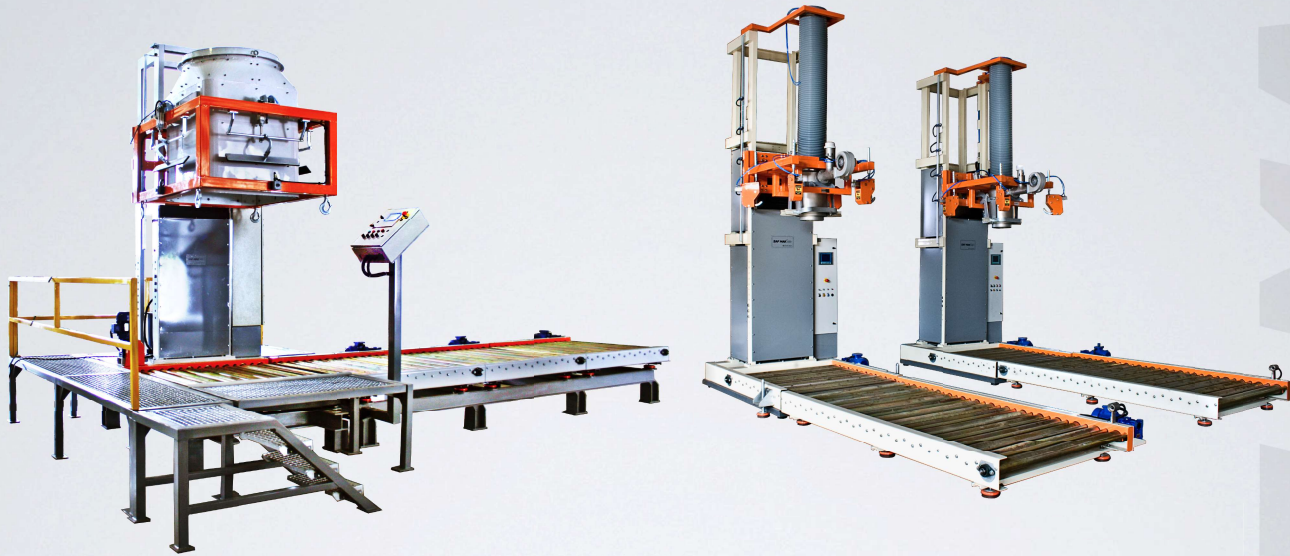
CE
CERTIFICATE

MAIN BUSINESS SUBJECT

Complete system solutions including design,
production and automation in the field of

**BULK MATERIAL HANDLING SYSTEMS &
PROCESS AUTOMATION**

for different industries such as plastics, glass,
rubber, food, chemicals, steel, mining...



BIG BAG FILLING MACHINES

Filling big bags up to 2 tons.

SAFE MAK



BIG BAG DISCHARGE MACHINES

Dust free discharging according to weight.

SAFE MAK



BAG FILLING MACHINES

Filling bags from 15 kg to 50 kg accurately.

SAF MAK



LIQUID FILLING MACHINES

Filling tins, drums and IBC accurately.

SAFE



PNEUMATIC TRANSPORT SYSTEMS

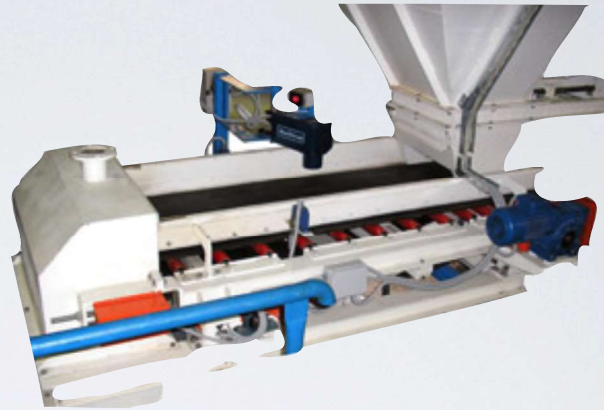
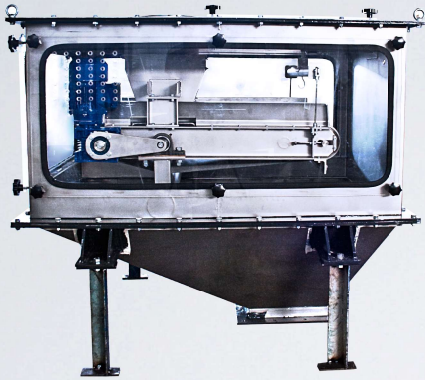
Dense, Dilute and Vacuum Transport systems.

W
A
S



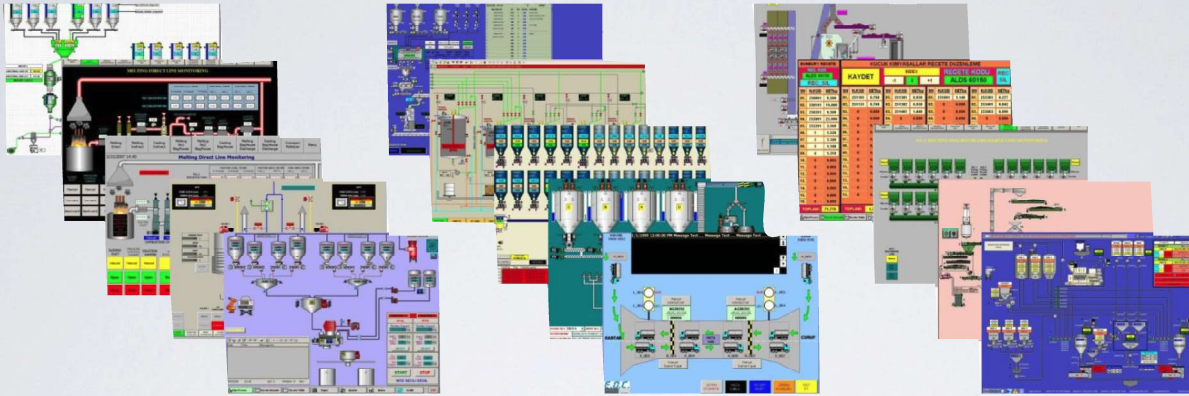
BATCH DOSING SYSTEMS

Recipe based dosing systems.



CONTINUE DOSING SYSTEMS

Loss in weight and weigh belt feeder applications.



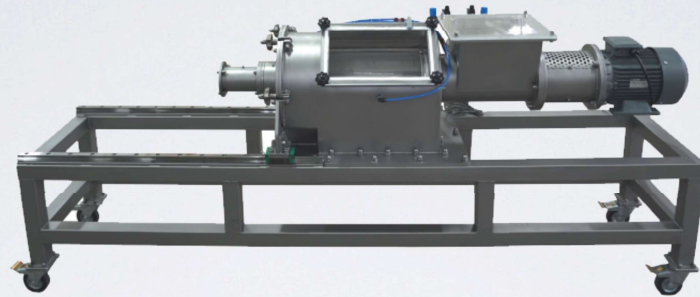
AUTOMATION SYSTEMS

PLC and SCADA systems.



BAG DISCHARGE UNITS

Effective and Dust Free Bag Discharge Units



SIFTER UNITS

Pneumatic Sentrifuge & Vibro Sifter Units





ELEVATORS

Z Type & Vertical Bucket Elevators

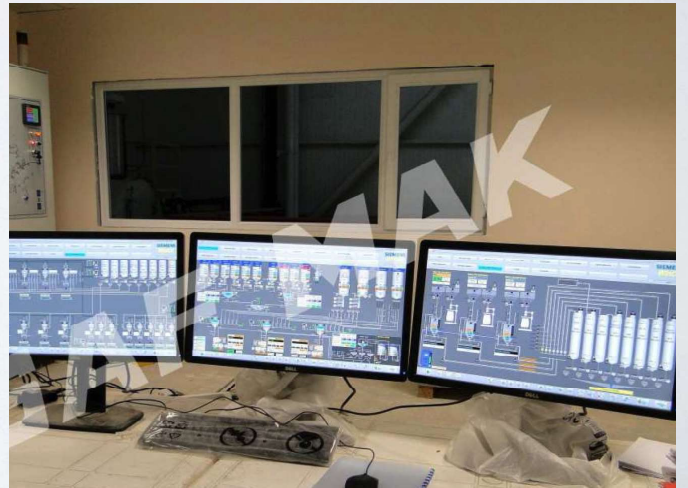




DEDUSTING SYSTEMS

Stand Alone & Central Filtering Units





A large yellow industrial hopper or feeder system is the central focus, mounted on a complex metal structure. The structure consists of numerous vertical and horizontal steel beams, creating a grid-like framework. Above the hopper, there are several large blue cylindrical components, likely part of a conveyor or sorting system. The background shows a dimly lit industrial environment with various pipes and machinery. The text 'SAF MAK' is overlaid in a bold, white, sans-serif font across the middle of the image.

SAF MAK

